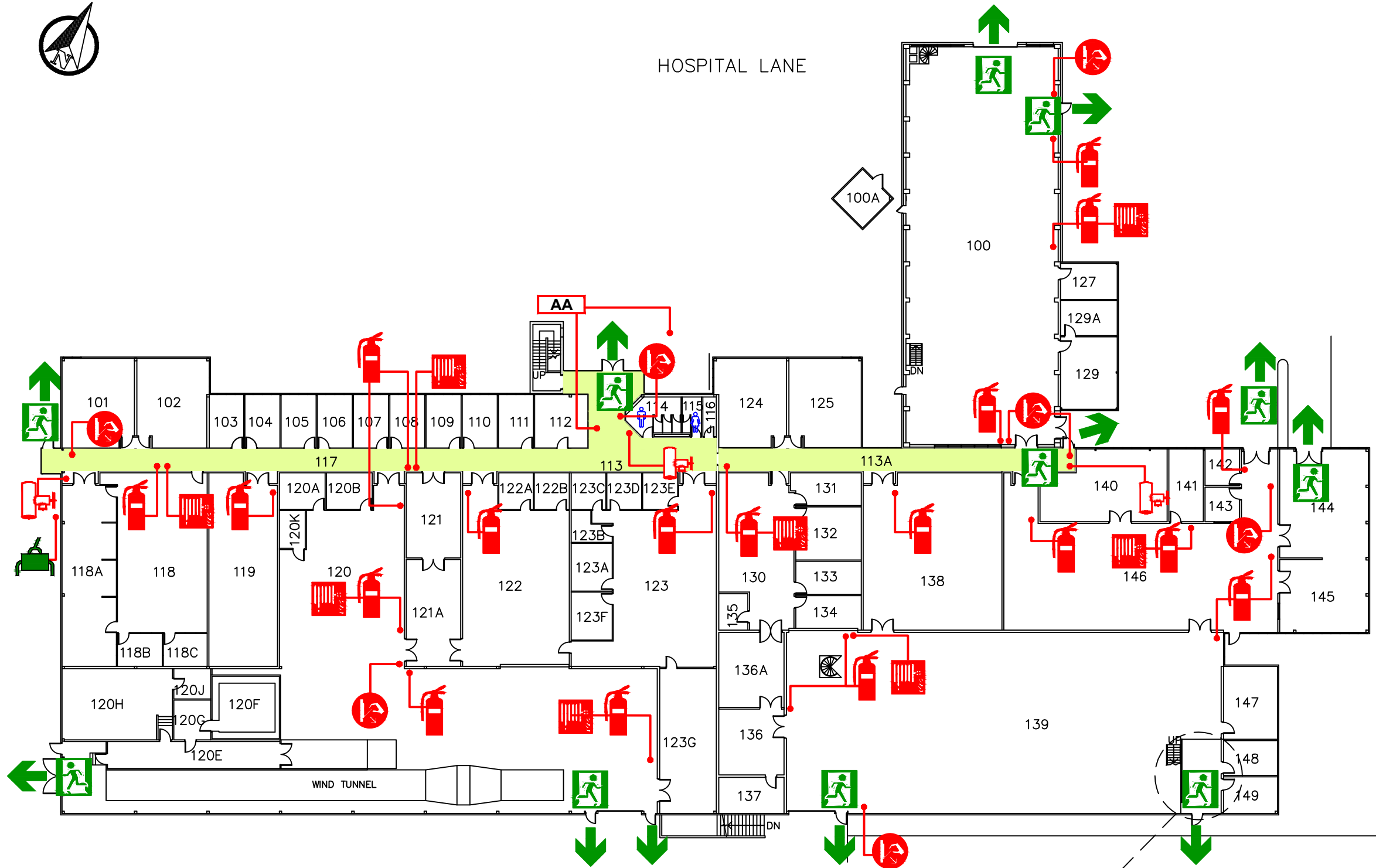


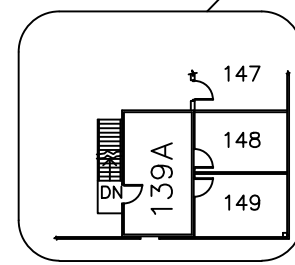


HOSPITAL LANE



APPLIED SCIENCE LANE

PREDESIGNATED MEETING AREA EAST SIDE OF EAST MALL



MEZZANINE

EMERGENCY INSTRUCTIONS

If you discover a fire or explosion in the building:

- 1 Immediately activate the closest fire alarm/pull station.
- 2 Call 911.
- 3 Give the address and the nearest intersection (2275 EAST MALL at the intersection of East Mall & Biological Sciences Road)
- 4 Provide information about the emergency: Where is the fire? (Ground Floor, room # ____), How fast the fire is spreading? Are there people trapped?
- 5 If it is safe, control the fire.
- 6 Isolate the fire by closing doors behind you. Do not lock the doors.
- 7 Leave by the nearest safe exit.
- 8 Walk. Do not run. Shut doors behind you. On leaving the building move well away. Do not block road access.
- 9 Do not go back in the building for any reason until the all-clear has been announced by emergency personnel.
- 10 If you hear the fire alarm ringing - Follow steps 6 through 8 above.

In the event of a fire DO NOT USE ELEVATOR(s).

(See the map to your left for the location of all fire extinguishers, fire alarm/pull stations, safe exits and areas of refuge)

FOR EMERGENCIES CALL 911

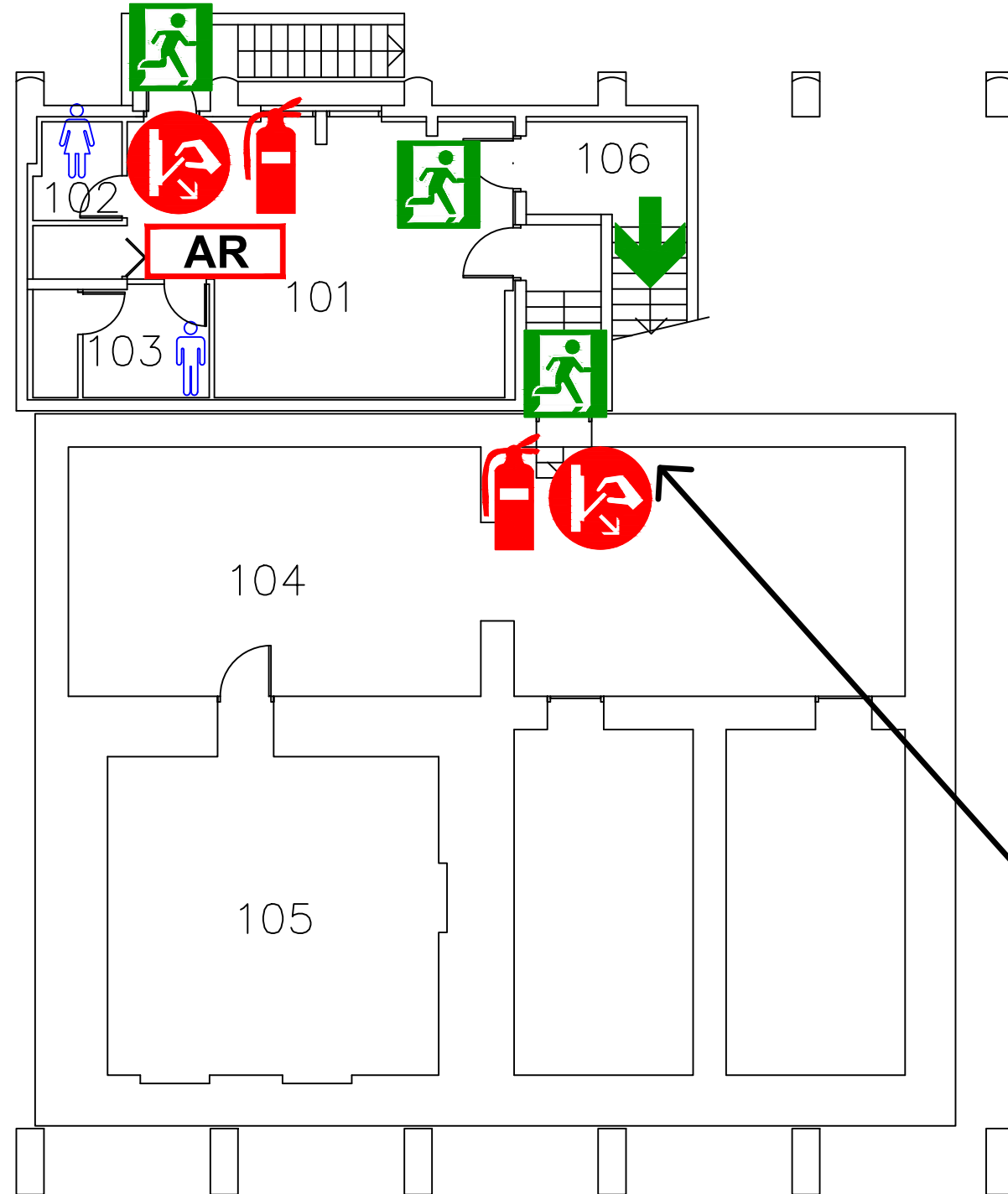
— LEGEND —

FIRE EXIT	PULL STATION/ FIRE ALARM	FIRE EXTINGUISHER	FIRE HOSE CABINET
FIRE ALARM ANNUCIATOR	STANDPIPE CONNECTION	GAS METER SHUT-OFF	

GROUND FLOOR PLAN
N.T.S.



CIVIL AND
MECHANICAL
ENGINEERING
STRUCTURES LAB
(309)



CIVIL AND
MECHANICAL
ENGINEERING
LABORATORIES
(307)

ENGINEERING
HIGH HEAD
ROOM
LABORATORY
(511)

PREDESIGNATED
MEETING AREA

YOU
ARE
HERE

BASEMENT FLOOR PLAN
N.T.S.

EMERGENCY INSTRUCTIONS

If you discover a fire or explosion in the building:

- 1 Immediately activate the closest fire alarm/pull station.
- 2 Call 911.
- 3 Give the address and the nearest intersection (2235 EAST MALL at the intersection of East Mall & Biological Sciences Road)
- 4 Provide information about the emergency: Where is the fire? (Basement Floor, room #___), How fast the fire is spreading? Are there people trapped?
- 5 If it is safe, control the fire.
- 6 Isolate the fire by closing doors behind you. Do not lock the doors.
- 7 Leave by the nearest safe exit.
- 8 Walk. Do not run. Shut doors behind you. On leaving the building move well away. Do not block road access.
- 9 Do not go back in the building for any reason until the all-clear has been announced by emergency personnel.
- 10 If you hear the fire alarm ringing - Follow steps 6 through 8 above.

**In the event of a fire
DO NOT USE ELEVATOR(s).**

(See the map to your left for the location of all fire extinguishers, fire alarm/pull stations, safe exits and areas of refuge)

FOR EMERGENCIES CALL 911

— LEGEND —



EXIT



PULL STATION/
FIRE ALARM



FIRE
EXTINGUISHER



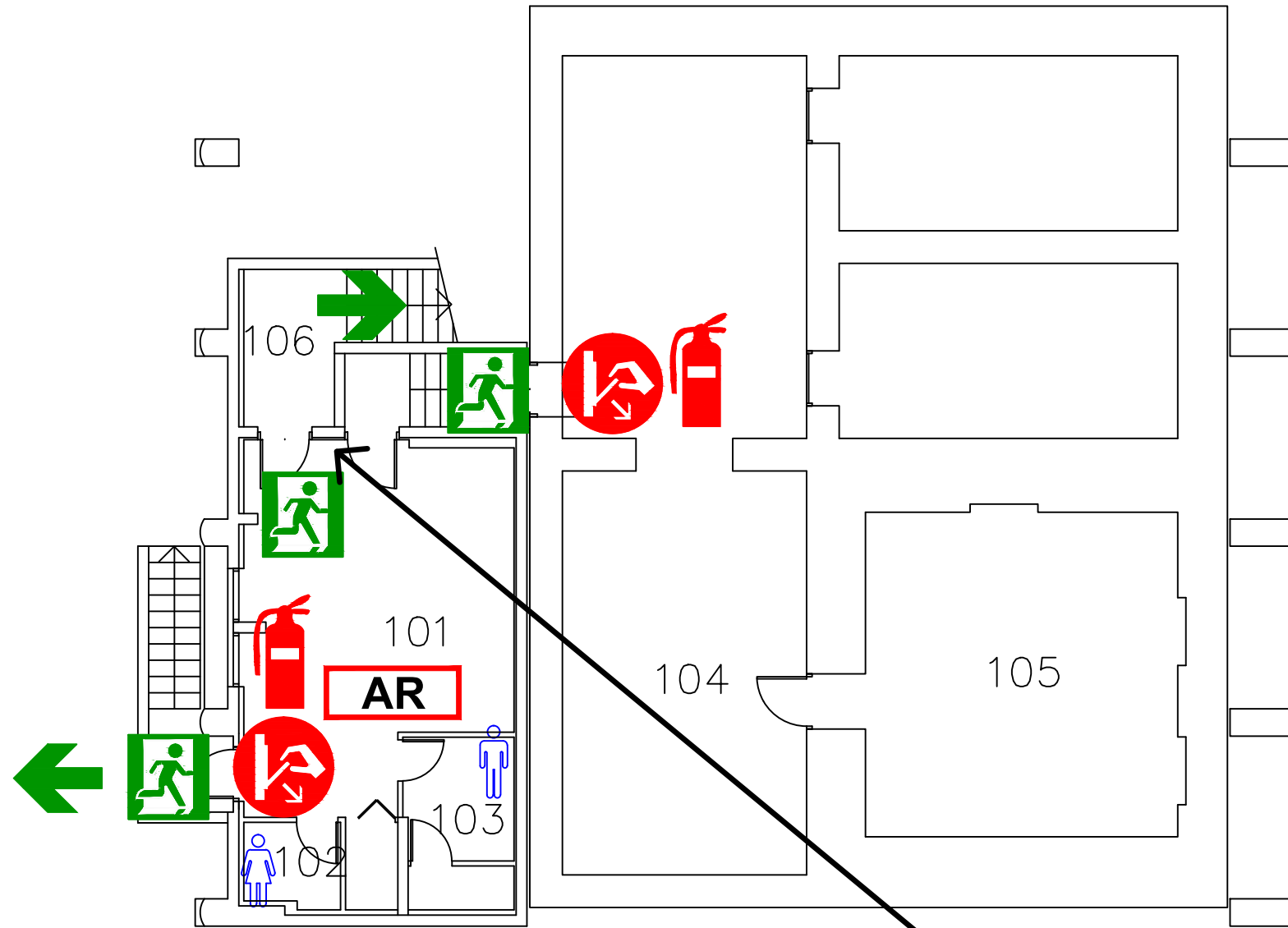
FIRE ALARM
CONTROL PANEL



PREDESIGNATED MEETING AREA

ENGINEERING HIGH HEAD ROOM LABORATORY (511)

CIVIL AND MECHANICAL ENGINEERING STRUCTURES LAB (309)



CIVIL AND MECHANICAL ENGINEERING LABORATORIES (307)

YOU ARE HERE

EMERGENCY INSTRUCTIONS

If you discover a fire or explosion in the building:

- 1 Immediately activate the closest fire alarm/pull station.
- 2 Call 911.
- 3 Give the address and the nearest intersection (2235 EAST MALL at the intersection of East Mall & Biological Sciences Road)
- 4 Provide information about the emergency: Where is the fire? (Basement Floor, room #___), How fast the fire is spreading? Are there people trapped?
- 5 If it is safe, control the fire.
- 6 Isolate the fire by closing doors behind you. Do not lock the doors.
- 7 Leave by the nearest safe exit.
- 8 Walk. Do not run. Shut doors behind you. On leaving the building move well away. Do not block road access.
- 9 Do not go back in the building for any reason until the all-clear has been announced by emergency personnel.
- 10 If you hear the fire alarm ringing - Follow steps 6 through 8 above.

In the event of a fire DO NOT USE ELEVATOR(s).

(See the map to your left for the location of all fire extinguishers, fire alarm/pull stations, safe exits and areas of refuge)

FOR EMERGENCIES CALL 911

— LEGEND —



EXIT



PULL STATION/
FIRE ALARM



FIRE
EXTINGUISHER

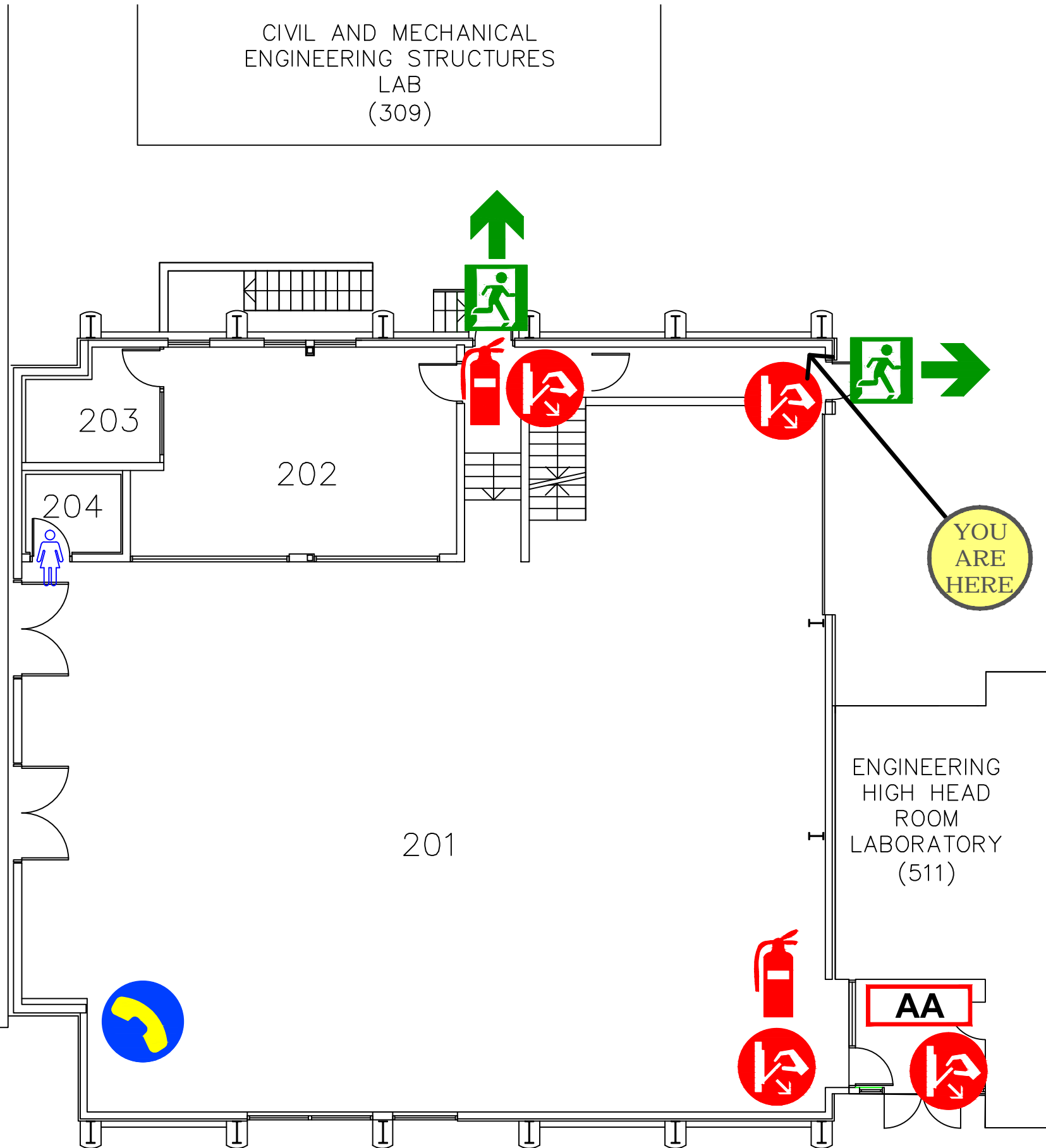


FIRE ALARM
CONTROL PANEL



CIVIL AND MECHANICAL
ENGINEERING STRUCTURES
LAB
(309)

CIVIL AND
MECHANICAL
ENGINEERING
LABORATORIES
(307)



GROUND FLOOR PLAN
N.T.S.

PREDESIGNATED
MEETING AREA

EMERGENCY INSTRUCTIONS

If you discover a fire or explosion in the building:

- 1 Immediately activate the closest fire alarm/pull station.
- 2 Call 911.
- 3 Give the address and the nearest intersection (2235 EAST MALL at the intersection of East Mall & Biological Sciences Road)
- 4 Provide information about the emergency: Where is the fire? (Ground Floor, room #____), How fast the fire is spreading? Are there people trapped?
- 5 If it is safe, control the fire.
- 6 Isolate the fire by closing doors behind you. Do not lock the doors.
- 7 Leave by the nearest safe exit.
- 8 Walk. Do not run. Shut doors behind you. On leaving the building move well away. Do not block road access.
- 9 Do not go back in the building for any reason until the all-clear has been announced by emergency personnel.
- 10 If you hear the fire alarm ringing - Follow steps 6 through 8 above.

**In the event of a fire
DO NOT USE ELEVATOR(s).**

(See the map to your left for the location of all fire extinguishers, fire alarm/pull stations, safe exits and areas of refuge)

FOR EMERGENCIES CALL 911

— LEGEND —



EXIT



PULL STATION/
FIRE ALARM



FIRE
EXTINGUISHER



FIRE ALARM
ANNUNCIATOR

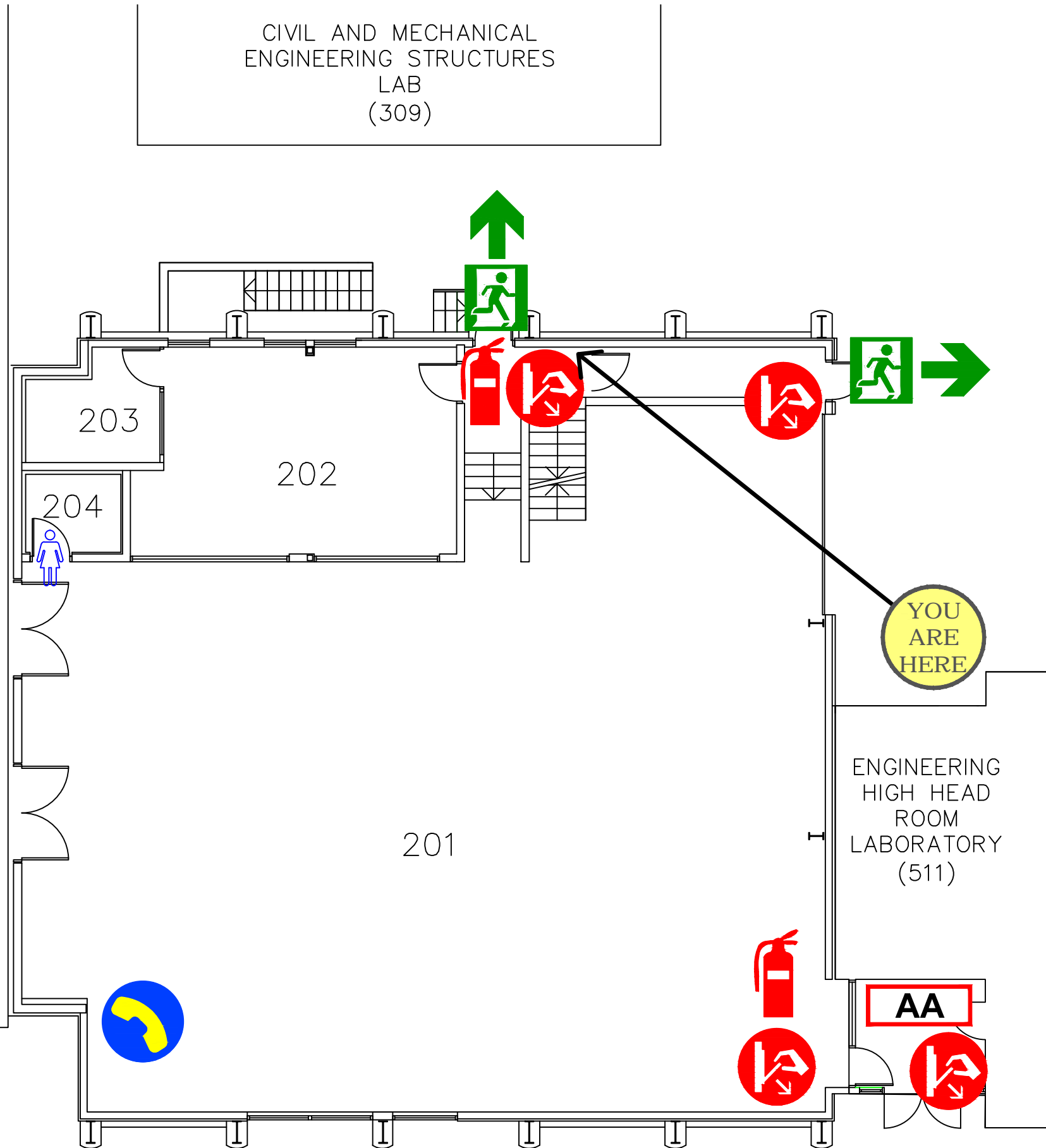


EMERGENCY
TELEPHONE



CIVIL AND MECHANICAL
ENGINEERING STRUCTURES
LAB
(309)

CIVIL AND
MECHANICAL
ENGINEERING
LABORATORIES
(307)



GROUND FLOOR PLAN
N.T.S.

PREDESIGNATED
MEETING AREA

EMERGENCY INSTRUCTIONS

If you discover a fire or explosion in the building:

- 1 Immediately activate the closest fire alarm/pull station.
- 2 Call 911.
- 3 Give the address and the nearest intersection (2235 EAST MALL at the intersection of East Mall & Biological Sciences Road)
- 4 Provide information about the emergency: Where is the fire? (Ground Floor, room number), How fast the fire is spreading? Are there people trapped?
- 5 If it is safe, control the fire.
- 6 Isolate the fire by closing doors behind you. Do not lock the doors.
- 7 Leave by the nearest safe exit.
- 8 Walk. Do not run. Shut doors behind you. On leaving the building move well away. Do not block road access.
- 9 Do not go back in the building for any reason until the all-clear has been announced by emergency personnel.
- 10 If you hear the fire alarm ringing - Follow steps 6 through 8 above.

**In the event of a fire
DO NOT USE ELEVATOR(s).**

(See the map to your left for the location of all fire extinguishers, fire alarm/pull stations, safe exits and areas of refuge)

FOR EMERGENCIES CALL 911

— LEGEND —



EXIT



PULL STATION/
FIRE ALARM



FIRE
EXTINGUISHER



FIRE ALARM
ANNUNCIATOR

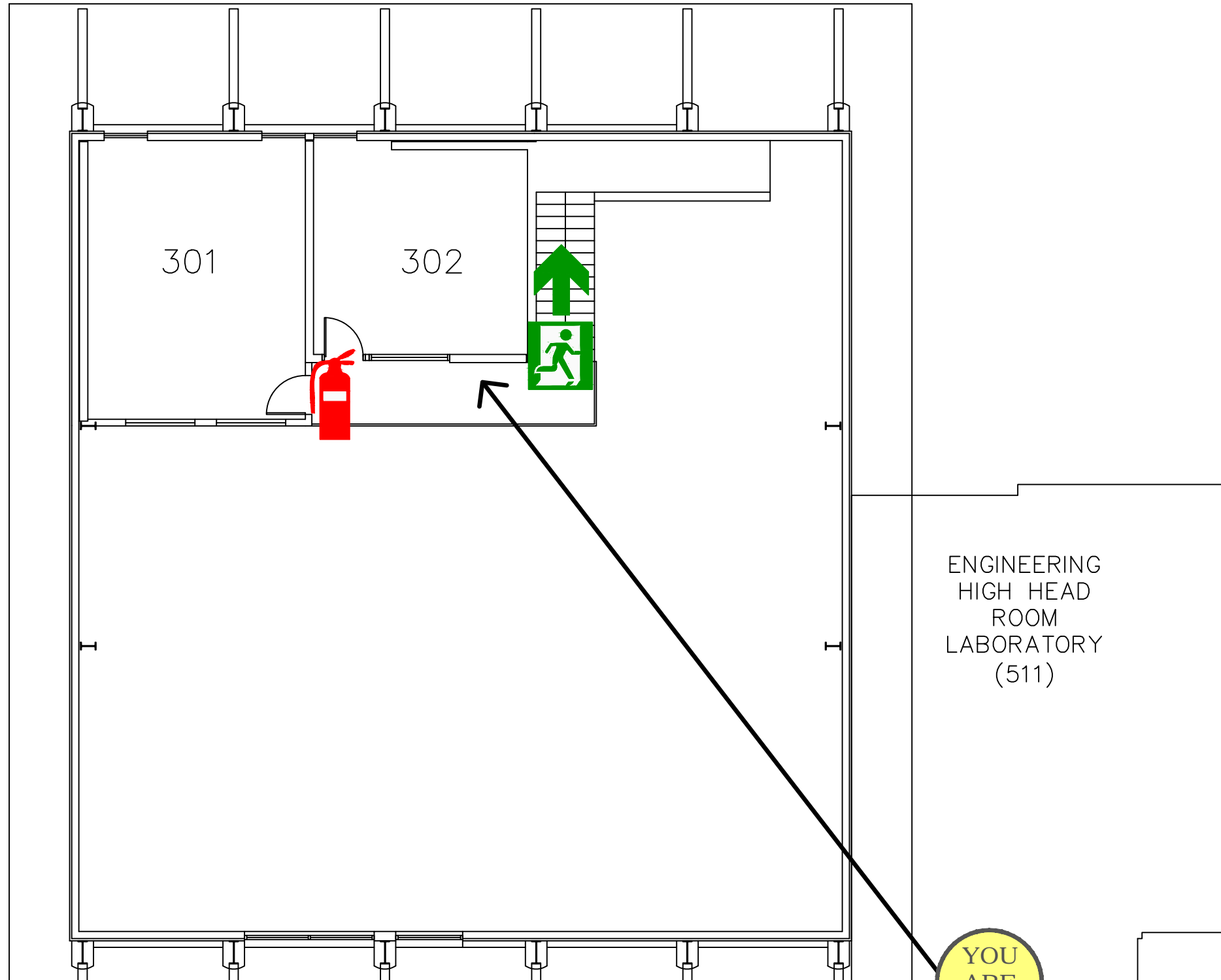


EMERGENCY
TELEPHONE



CIVIL AND MECHANICAL
ENGINEERING STRUCTURES
LAB
(309)

CIVIL AND
MECHANICAL
ENGINEERING
LABORATORIES
(307)



YOU
ARE
HERE

PREDESIGNATED
MEETING AREA

ENGINEERING
HIGH HEAD
ROOM
LABORATORY
(511)

EMERGENCY INSTRUCTIONS

If you discover a fire or explosion in the building:

- 1 Immediately activate the closest fire alarm/pull station.
- 2 Call 911.
- 3 Give the address and the nearest intersection (2235 EAST MALL at the intersection of East Mall & Biological Sciences Road)
- 4 Provide information about the emergency: Where is the fire? (Second Floor, room #____), How fast the fire is spreading? Are there people trapped?
- 5 If it is safe, control the fire.
- 6 Isolate the fire by closing doors behind you. Do not lock the doors.
- 7 Leave by the nearest safe exit.
- 8 Walk. Do not run. Shut doors behind you. On leaving the building move well away. Do not block road access.
- 9 Do not go back in the building for any reason until the all-clear has been announced by emergency personnel.
- 10 If you hear the fire alarm ringing - Follow steps 6 through 8 above.

**In the event of a fire
DO NOT USE ELEVATOR(s).**

(See the map to your left for the location of all fire extinguishers, fire alarm/pull stations, safe exits and areas of refuge)

FOR EMERGENCIES CALL 911

— LEGEND —



EXIT



FIRE
EXTINGUISHER